



Hokusai's masterpiece *Happa nirami ho'o-zu* (Phoenix Glaring in All Directions)

Ganshojin Temple Ceiling Painting

The ceiling of the great room in the temple's main hall is decorated with a brilliantly colored painting of a phoenix measuring more than 30 square meters. Hokusai painted the work, his largest, in 1848 at the age of 89. The pigments alone, which used minerals such as cinnabar, malachite and realgar imported from China, cost 150 ryo (more than 2kg of gold). Incorporating more than 4400 sheets of gold leaf, the work retains its luster and vivid color even today.



The Deva Gate at Ganshojin Temple

Takai Kozan Museum

Takai Kozan was one of the wealthiest farmer-merchants in Obuse during the late Edo Period. Keeping company with leading thinkers and literati of the day, he was also involved with the reforms that came with the fall of the Tokugawa shogunate. Katsushika Hokusai was among the artists and intellectuals he invited to Obuse. The museum's two main structures are Hekiiken, the small studio Kozan build for Hokusai, and Yuzenro, the larger building that served as Kozan's salon and study. With trap doors to facilitate a quick escape, Yuzenro was a place where Kozan's guests could speak freely. Museum exhibits include Kozan's personal effects, calligraphic works, and satirical paintings of otherworldly creatures.

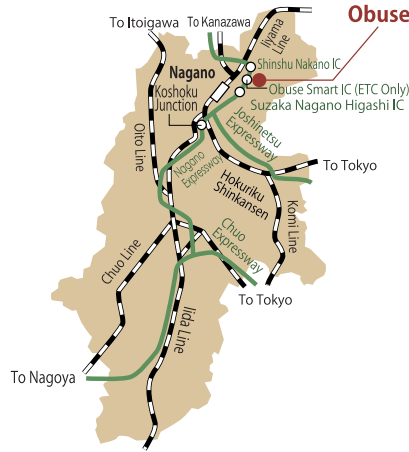


Second floor of Yuzenro (Town Historic Spot)



Zo to tojinzu (Four-panel folding screen)

Nagano Prefecture



Getting to Obuse

●By Train

To Nagano by JR Railways:

- 1.5 hours from Tokyo
- 4 hours from Osaka
- 3 hours from Nagoya
- 1 hour from Kanazawa
- 2 hours from Niigata

To Obuse by Nagano Dentetsu Railway:

- 35 min. from Nagano
- 30 min. from Yudanaka

●By Car

By the Joshinetsu Expressway:

- 15 min. from the Suzaka Nagano Higashi IC
- 7 min. from the Shinshu Nakano IC
- 5 min. from the Obuse Smart IC

By National Route 18:

- 5 min. from the Toyono intersection

●Contact Information

Obuse Culture and Tourism Association
c/o Obuse Station, 1497-2, Oaza Obuse, Obuse Town, Kami Takai-gun, Nagano Prefecture 381-0201, Japan
Phone: 026-214-6300 Fax: 026-214-6363
<http://www.obusekanko.jp>
e-mail: kanko-information@obusekanko.jp

Obuse Town Office
1491-2, Oaza Obuse, Obuse Town, Kami Takai-gun, Nagano Prefecture 381-0297, Japan
Phone: 026-247-3111 (Main line)
<http://www.town.obuse.nagano.jp>
E-mail: obuse@town.obuse.nagano.jp

OBUSE TOURIST GUIDE

信州

おぶせ



A Town of Chestnuts, Hokusai and Flowers



Onami (Masculine Waves) ceiling panel from the Kanmachi festival float

北斎

Hokusai



Hokusai in Obuse

It was during the Tenpo Period (1830–1844) that Takai Kozan first met ukiyo-e artist Katsushika Hokusai through Juhachiya, an Obuse merchant with a dry goods shop in Edo's bustling Nihonbashi area. Some years later, in the autumn of Hokusai's eighty-third year, Kozan invited Hokusai to Obuse. It was the first of four visits during which the artist devoted himself to the brush paintings that marked his later years. As a prosperous economic center for the Kitashinano region, Obuse was experiencing a flourishing of local culture.



Hokusai Museum

The museum was established in 1976 to preserve, collect and exhibit works that Hokusai left behind in Obuse. More than 40 original paintings done during the artist's visits are on permanent display, as well as the two festival floats whose ceiling panels he painted. The colors of the dragon, phoenix, and "angry wave" ceiling panels are as beautiful now as ever before.



Museums



Temples



Flowers



Food

Jurei usuzumi-zakura by Chinami Nakajima



Obuse Museum and Nakajima Chinami Gallery

With a gallery devoted to the work of Obuse-born *nihonga* painter Chinami Nakajima, two rooms for special exhibitions, storehouses displaying festival floats, a museum store and coffee shop, there is always something to see or do at the Obuse Museum.

026-247-6111



Japanese Lamp and Lighting Museum

Japanese-made lamps and lighting implements from the Edo, Meiji and Taisho periods.

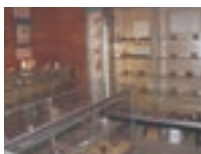
026-247-5669



Kurinoki Museum

Items from the private collection of Sashichi Sakurai, displayed in a remodeled storehouse.

026-247-5166



Sarian Kyusu Collection

More than 300 teapots and other items dating back to the late Edo and early Meiji periods.

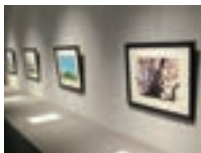
090-4009-8353



Ryoan Antique Ceramics Collection

A private museum with permanent exhibits displaying antique ceramics throughout the ages.

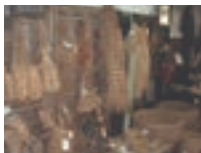
026-247-5866



Obuse Fujioka Makio Museum

A collection of original paintings created by the picture book artist Makio Fujioka.

026-247-5461



Obuse History and Folk Museum

Archaeological materials, domestic items and industrial implements telling the story of Obuse's past.

026-247-4927

Other Galleries:

●GLASS STUDIO Licco 026-247-2754

●Gallery Kura 026-251-4033

●Gallery Tojuro 090-4721-4971

●The Chestnut Diary Gallery 026-247-2754

●Gallery Objet 026-247-3090

●Art & Craft Yoshinoya 026-242-6606



The Yakushi Hall at Jokoji Temple

Constructed in 1408, the Yakushi Hall has been designated a National Important Cultural Property as a representative example of early Muromachi period architecture. The structure holds numerous cultural assets including a seated figure of Yakushi Nyorai, statues of the Twelve Heavenly Generals, murals and gilt bronze Buddha statuaries.

026-247-3924



Genshoji Zen Temple

Established about 600 years ago, the temple was given its current name by Kosaka Masanobu, chief retainer to 16th-century *daimyo* Takeda Shingen. The main gate, which holds statues of *kongo rikishi* guardians, has been designated a cultural property by the town.

026-247-2100



Shounji Temple

The site of Takai Kozan's grave, Shounji also exhibits other items from his life including a giant brush with a 1.5m handle, paintings of otherworldly creatures and examples of his calligraphy. The ceiling of the great room contains a painting of a dragon by Seika Kobayashi that measures more than 20 square meters.

026-247-3256



New Life Chapel

Constructed in 1934 to serve the adjacent tuberculosis sanitarium, which was established in 1932 and treated patients such as author Takehiko Fukunaga, the ivy-covered chapel operates as a church open to all. The stained glass in the entranceway depicts Obuse's chestnuts and apples.

026-247-2033



Kuri no Komichi

Once walked by Hokusai and Kozan, this narrow pathway now links the Hokusai Museum with Yuzenro at the Takai Kozan Museum. Paved with blocks of chestnut wood, it is the perfect place for a relaxing stroll.



Jinya-Koji

During the Edo period in the early 1700s, Obuse was administered directly by the shogunate through a local magistrate's office. Following the Jinya-koji path leads to a small stone shrine from the period that marks its location.



町並 Townscape



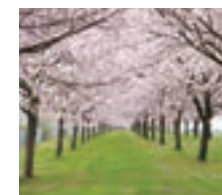
Obuse's flower projects arose from its citizens' love of the town and desire to receive visitors warmly. Flowers are a terrific catalyst for interaction between people.



Floral Garden Obuse

The 15,000 square meter grounds contain flowerbeds, a landscaped hill garden and an open lawn. With flowers blooming in every season, the garden bustles with visitors throughout the year.

026-247-5487



Chikumagawa Riverside Park

Roughly 600 *yaezakura* cherry trees line a 4 km stretch of the embankment—familiarily known as the *sakurazutsumi*—running along the Chikuma River parallel to the Joshin'etsu Expressway. Below the embankment is a lovely open space planted with flowering peach, flowering mustard, and *somei yoshino* cherry trees. During spring when the flowers are in bloom it becomes an especially popular community park, cherry-blossom viewing site, and tourist spot.



Open Gardens

Many residential gardens in Obuse are open to the public. Not all are tended by professionals; many are hobby gardens cared for by the people who live there. Welcoming visitors with the special warmth and pride of residents, these gardens brighten up homes and neighborhoods and offer much to see.



Obuse has many local specialties handed down from times past, as well as special agricultural products like chestnuts and round eggplants that have flourished in the climate. The local food industry places an emphasis on distinctive foods and flavors that are available nowhere else.



Obuseya

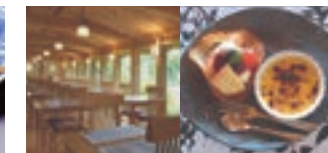
Located in the Sixth-Order Industry Center and operated by the Town Promotion Public Corporation, this shop offers Obuse agricultural produce and other local specialties including fresh fruit, vegetables, apple vinegar.

026-242-6600



Chestnuts

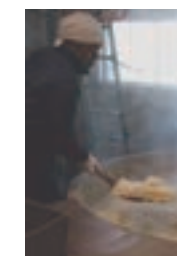
Cultivation of chestnuts in Obuse is said to date back more than 600 years. Presented to the shogun during the Edo period. Ripe Obuse chestnuts today are turned into various and delicious treats.



Obuse Hanaya

Overlooking Floral Garden Obuse through the windows that let in abundant natural light as well as the beautiful view, the restaurant serves an eclectic menu made with select local ingredients.

026-247-1187



Sake Breweries in Obuse

The four breweries in Obuse each take advantage of the town's excellent water and rice, as well as its favorable climate, to produce a variety of delicious sake.



Obuse Milk

A long-time local favorite, Obuse Milk uses carefully selected ingredients and low-temperature pasteurization for the fresh, full-bodied taste of raw milk.